

Evaluation of Packaging for Soil-Degradable Sensors

Manasa Sripathi

Poster B14

SUNFEST REU Program

PI: Kevin Turner

Mentor: Gokulanand Iyer



EVALUATION OF PACKAGING FOR SOIL-DEGRADABLE SENSORS



Manasa P. Sripathi, (The University of Texas at Austin), *SUNFEST* Fellow,
Gokulanand M. Iyer, Elizabeth V. Schell, and Kevin T. Turner



Step 1: Create a packaging design that will maintain sensor performance.

Step 2: Determine a packaging material that will biodegrade within one crop season.

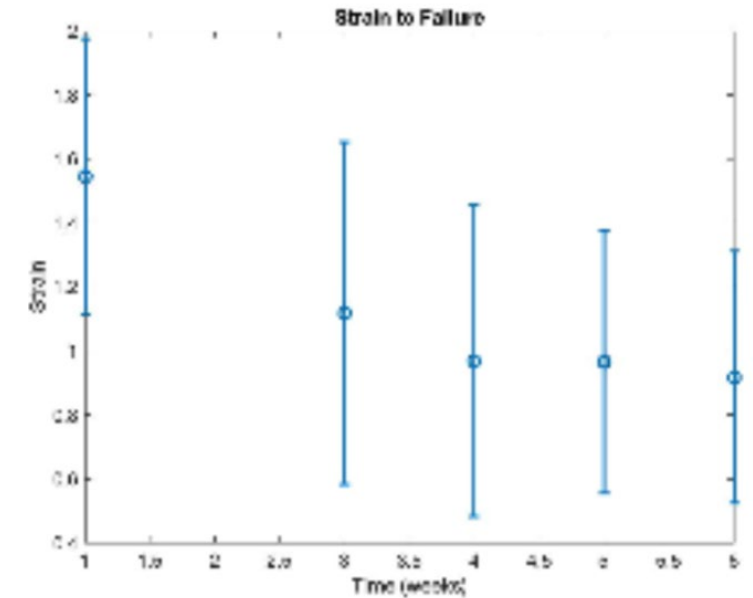
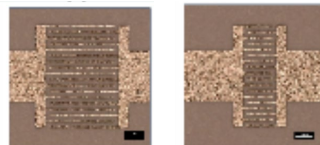


The Internet of Things for Precision Agriculture
an NSF Engineering Research Center

Understanding Packaging

Electrical

Mechanical



Come by my poster to learn about biodegradable packaging!